

4 | Single Wall Rigid Flue System

Figure 1



Figure 2



Figure 3

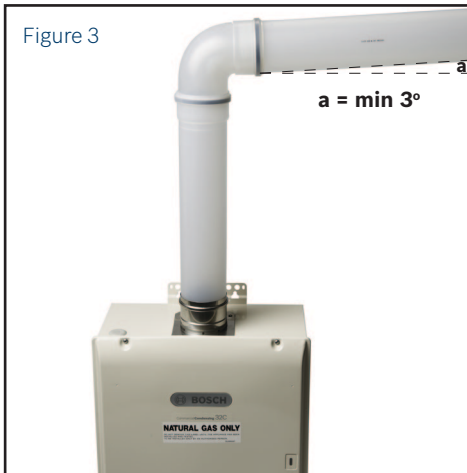
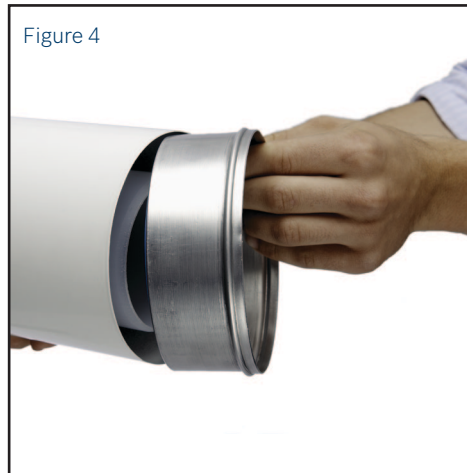


Figure 4



Appliance (Variant)	Product Description
BCVC-100C	Vent Cap
MG85176	Extension PP 100 x 500 mm
MG85177	Extension PP 100 x 1000 mm
MG85181	90° Elbow PP 100 mm
MG85182	45° Elbow PP 100 mm
MG84631	Wall bracket 100 mm
MG87930	Horizontal Flue Terminal PP 100 mm
MG84862	Roof Terminal Vertical 450 PP 100/150
MG75439	Air Cover Roof Terminal 100/50
MG27356	Sealing Ring

Installation Instructions for Bosch Polypropylene (PP) Single Wall Rigid Flue System

(Suitable for BC3200RA* Bosch 32C only)



General Information

- > These instructions must be followed in conjunction with the instructions in the manual that are supplied with the appliance. This manual gives special instructions for applications, pressure drops, maintenance and mounting of the complete flue system.

Contact Information

- > If you have any questions in relation to these instructions please contact Bosch Hot Water on 1300 30 70 37 to speak to a qualified technician.

MGINSBC32

Warnings

- > Examine all components for possible shipping damage prior to installation.
- > Proper joint assembly is essential for a safe installation. Read all instructions supplied with the flue terminal before beginning the installation and follow these instructions exactly as written.
- > This flue system must be free to expand and contract under normal operation.
- > Check the integrity of joint upon completion of assembly.
- > This flueing system must be supported in accordance with these instructions.
- > Assure unrestricted flue movement where required through walls, ceilings & roof penetrations.
- > Do not mix pipe, fittings or joining methods from different flue system manufacturers. Do not use adhesives of any kind with this flueing system.
- > Always use genuine Bosch roof or wall terminations. Terminating the flue pipe with an elbow or tee is prohibited.
- > The minimum clearance to combustible materials for the Bosch Single Wall Rigid Flue System is 30mm. Use this measurement only if the local regulations do not recommend greater clearances. It is prohibited to place any type of insulation around the flueing system within these clearances.
- > Do not use grease or other lubricants on the flue seals. Only water may be used for this purpose. Grease or other lubricant can make the seal brittle or it can result in tears in the surface of the seal, this will result in flue gas leakage.

Installation

Please refer to the Installation Manual of the 32C for details of the flue system design.

1. Ensure that the black sealing ring (MG27356) is installed in the groove of the stainless steel flue spigot on the appliance (This seal is supplied with the flue terminal). Refer Figure 1.
2. Start at the appliance stainless steel flue spigot and install the system with the female ends (with the integral seal) pointing away from the appliance. Refer Figure 2.
3. Be sure that the flue is cut square to the end of the pipe and that burrs are removed before assembly (if necessary).
4. Take precautions with horizontal installations. The slope must be at least 5cm per metre towards the hot water service. Refer Figure 3.
5. Mount the brackets (MG84631) on a fixed part of the building (i.e. wall). The brackets are supplied as a pack of three and must be fixed as follows:
 - 5a. Straight flue sections that are installed vertically must be supported by brackets every 2m or less.
 - 5b. Straight flue sections installed with a slope must be supported with at least one bracket per section; these brackets must be installed at a maximum distance of 150mm from the female end.
7. It is recommended to rotate the joints slightly when assembling them. Only use water for easier assembly. Do not use adhesives, grease or other lubricants under any circumstances.
8. Take care that the load of the flue is not supported by the appliance.
9. When using the vertical flue terminal (MG84862) please ensure to install the air cover (MG75439) into the bottom air intake side of the terminal. Refer to Figure 4